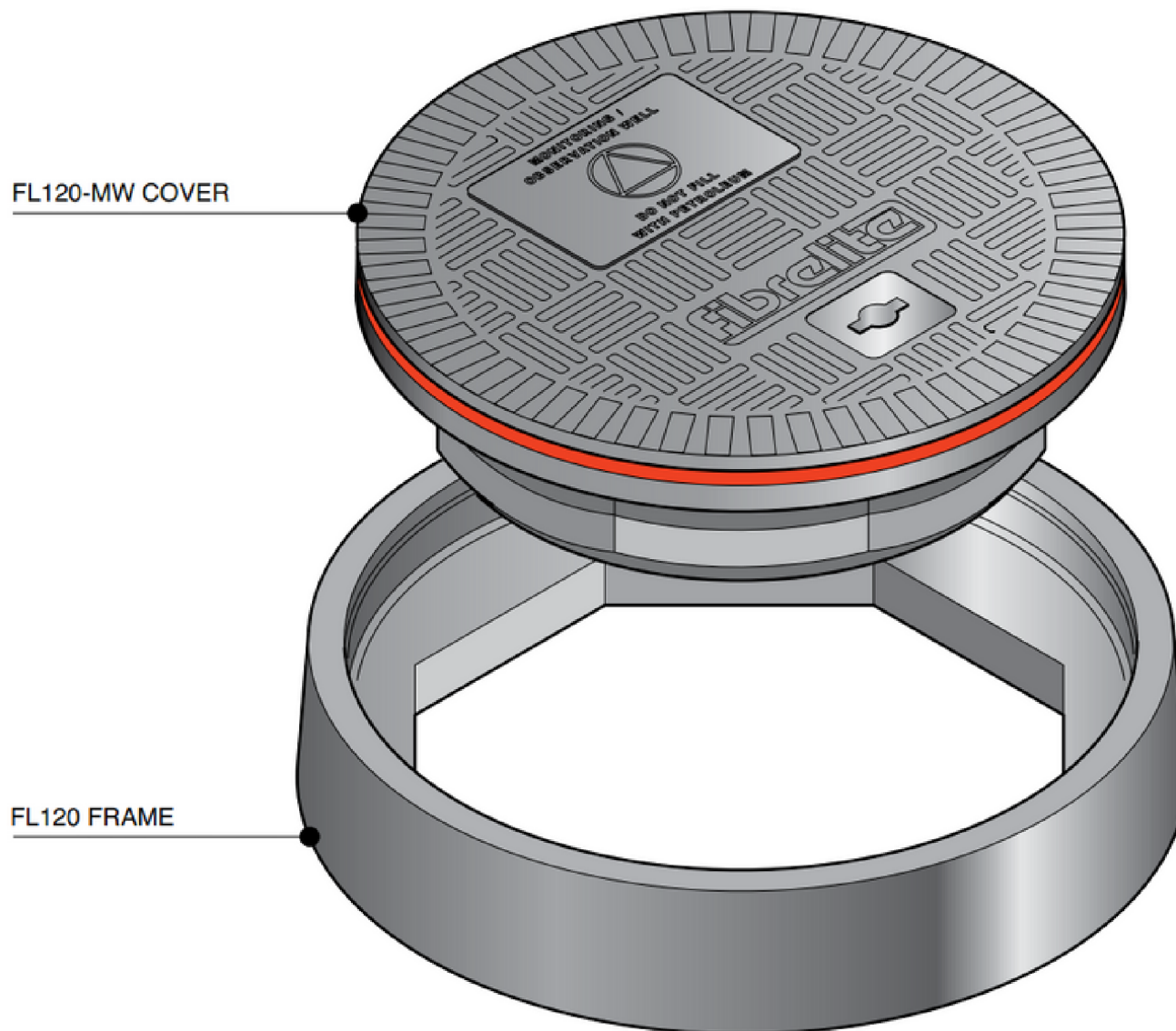
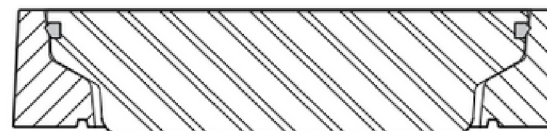
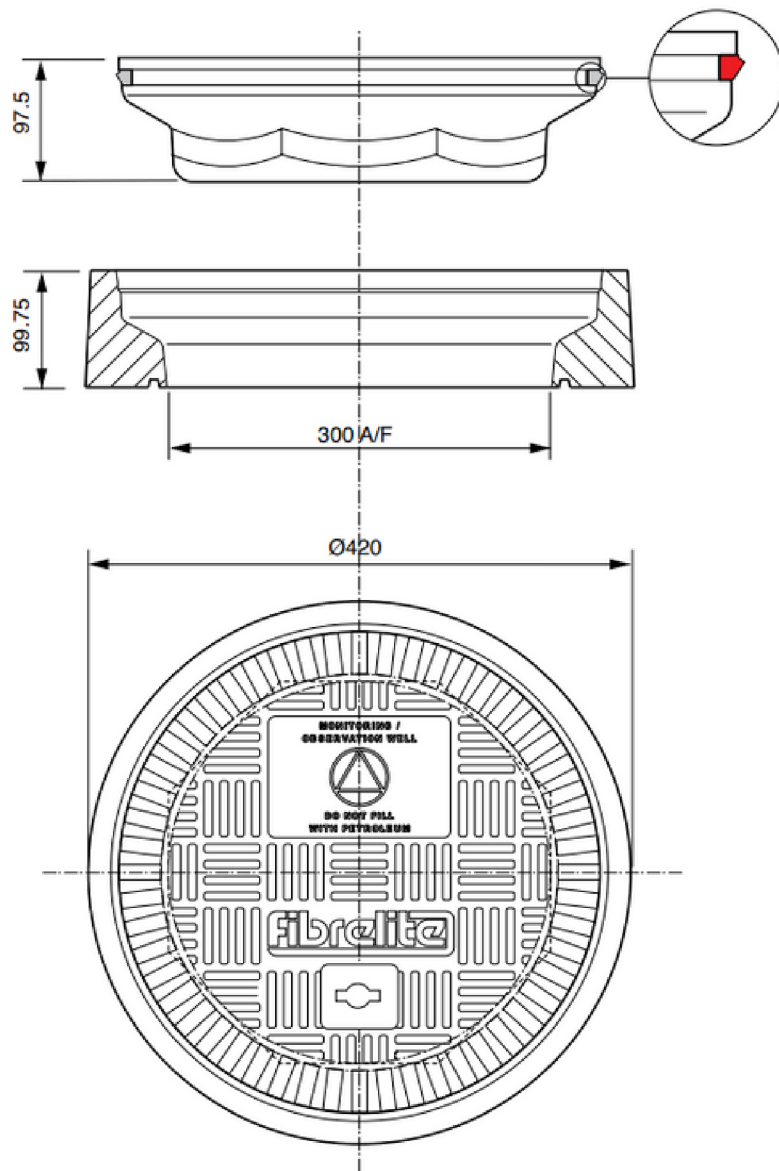


FL120-MW





Load Rating	Cover Weight	Frame Weight
B125	5.5kg	4kg
C250	6.5kg	4kg
D400	6.75	4kg

CONCRETE

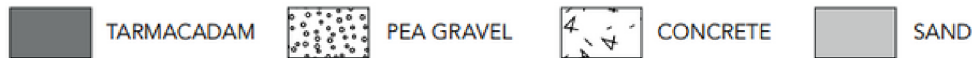
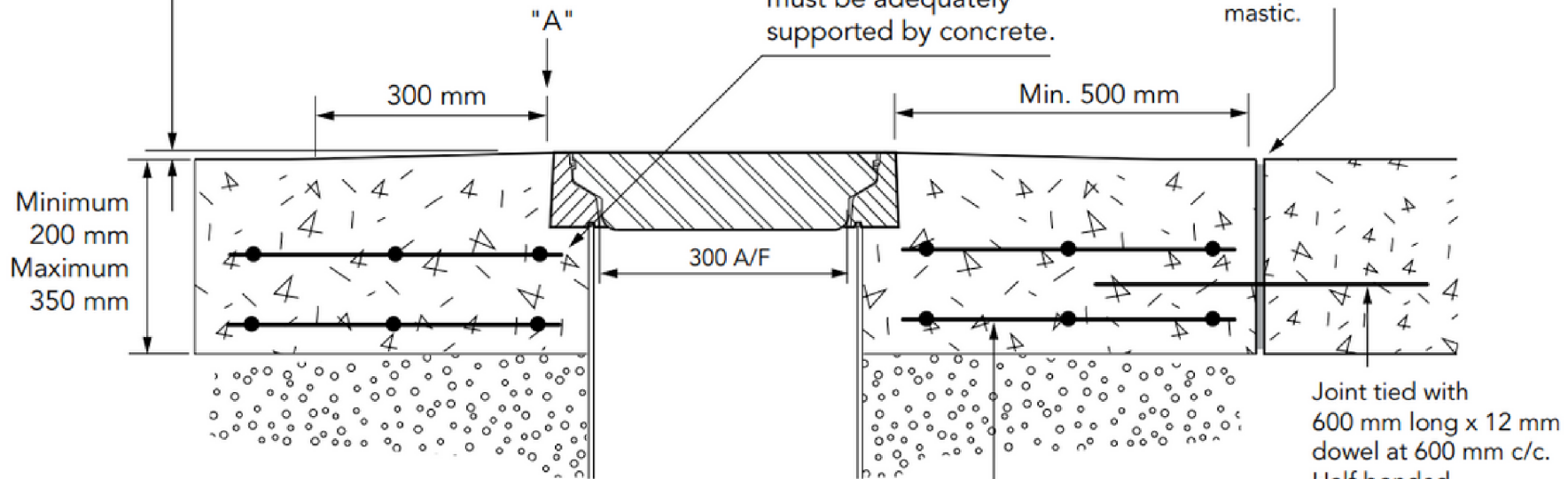
VERY IMPORTANT

OUTER EDGE "A" OF FRAME SET 5 mm ABOVE GENERAL GRADE AREA WITH CONCRETE RAMPED AWAY OVER 300 mm

VERY IMPORTANT

The underside of the frame must be adequately supported by concrete.

Expansion joint filled with petrol resistant mastic.

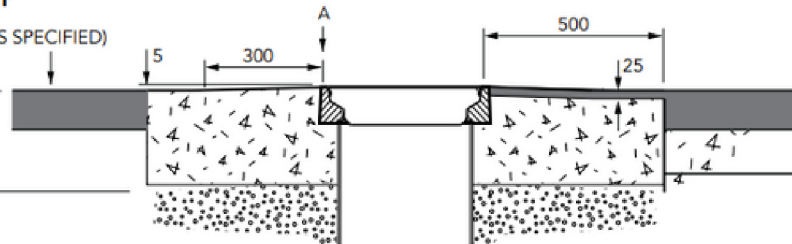


Concrete reinforced with 2 layers of reinforcement mesh.

BLACKTOP

(THICKNESS AS SPECIFIED)

Minimum 200 mm
Maximum 350 mm



TARMACADAM

(THICKNESS AS SPECIFIED)

Minimum 200 mm
Maximum 350 mm

